

THE COLLEGE OF ENGINEERING SIGNATURE BUILDING



VIEW FROM EES BUILDING



VIEW FROM ENGINEERING QUADRANGLE AT NIGHT



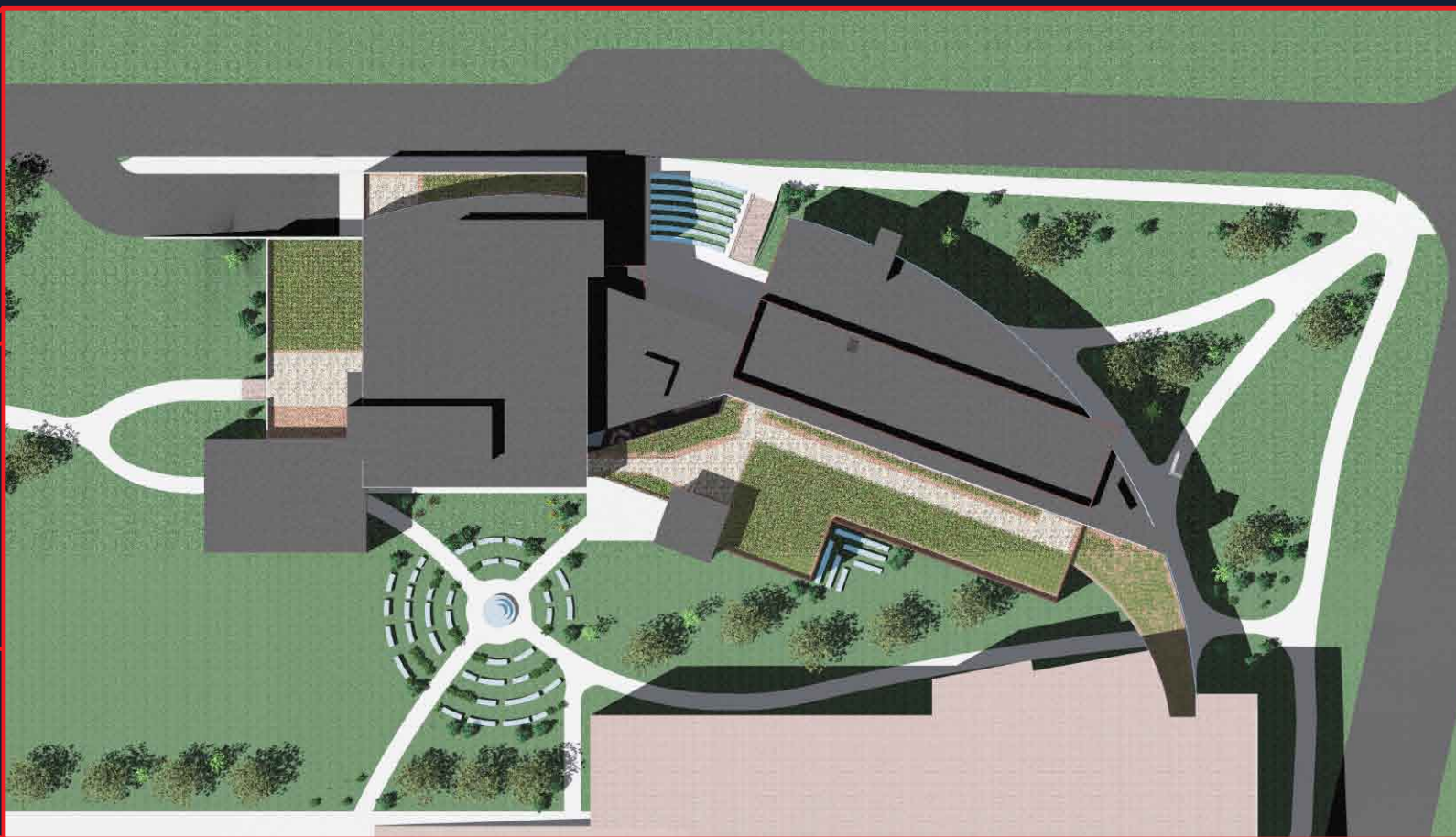
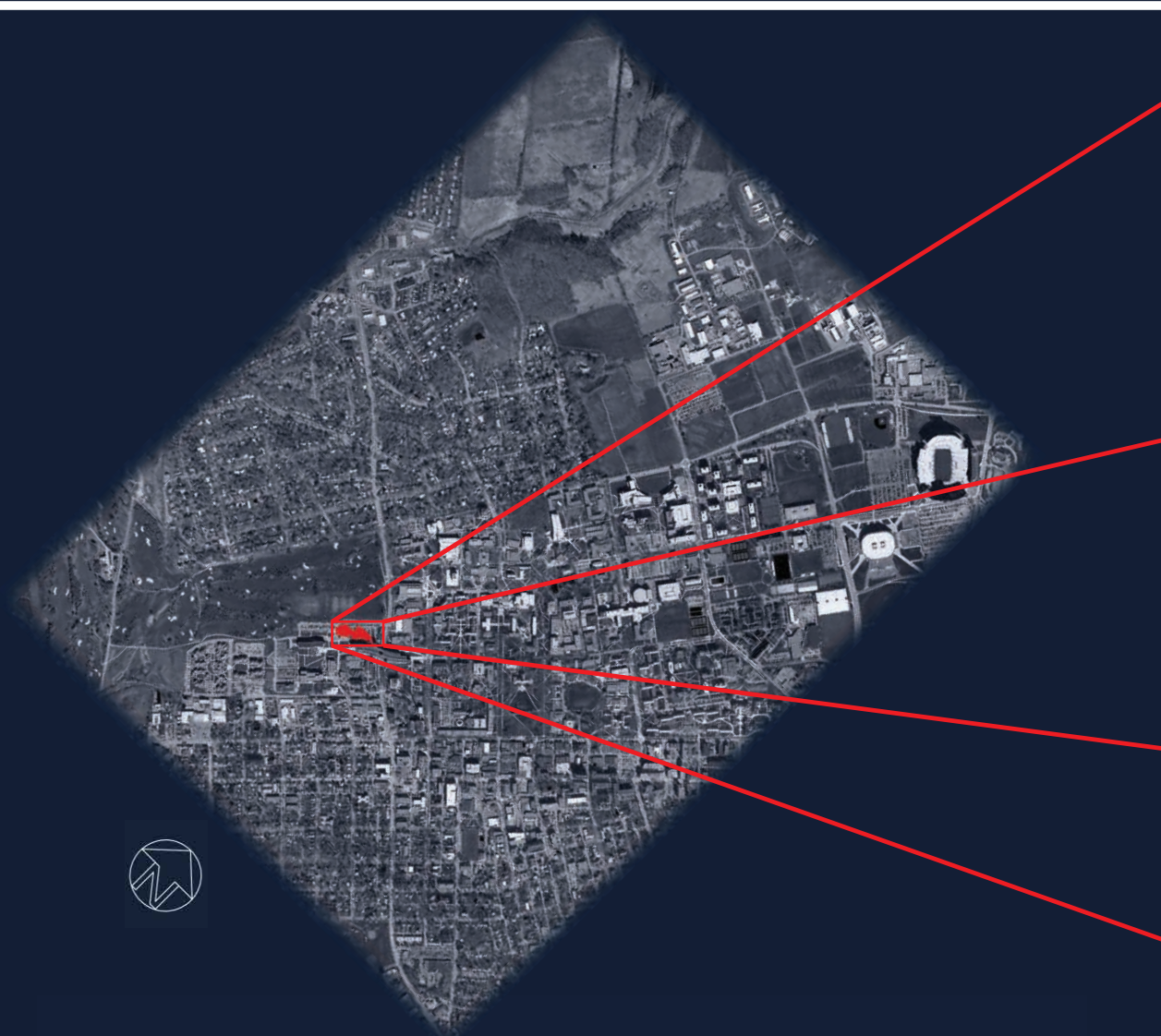
VIEW FROM IST BRIDGE

SITE LOCATION

WEST CAMPUS, NORTH OF THE IST BUILDING.

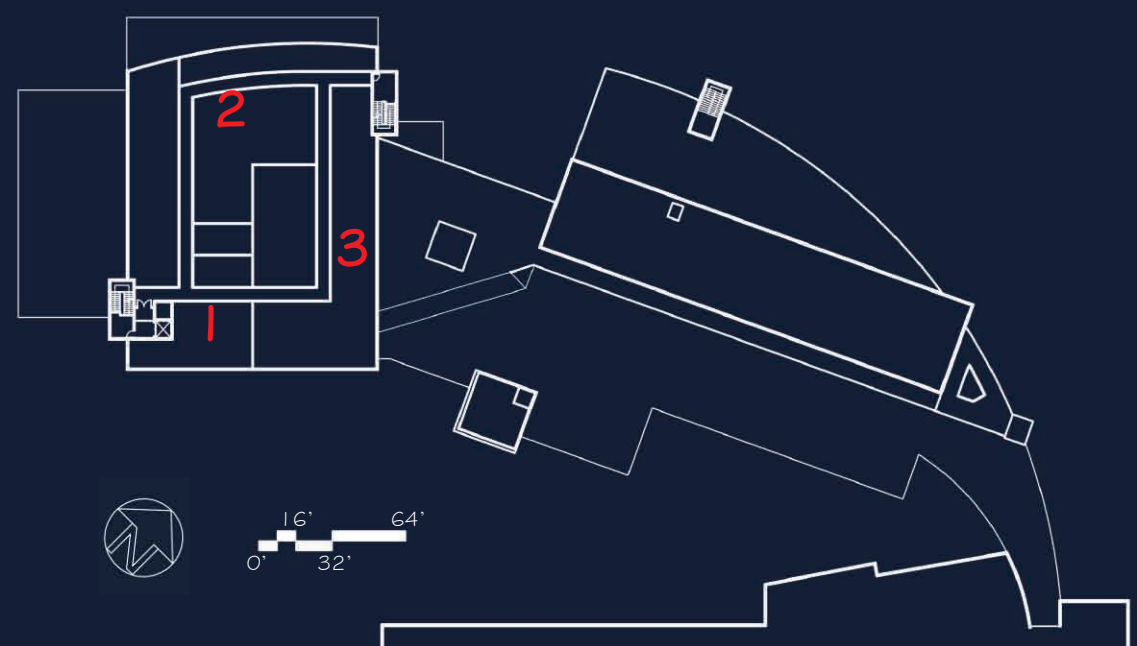
GOAL

TO CREATE A SIGNATURE BUILDING FOR THE COLLEGE OF ENGINEERING WHILE RESPECTING THE ARCHITECTURE EXISTING IN THE AREA.



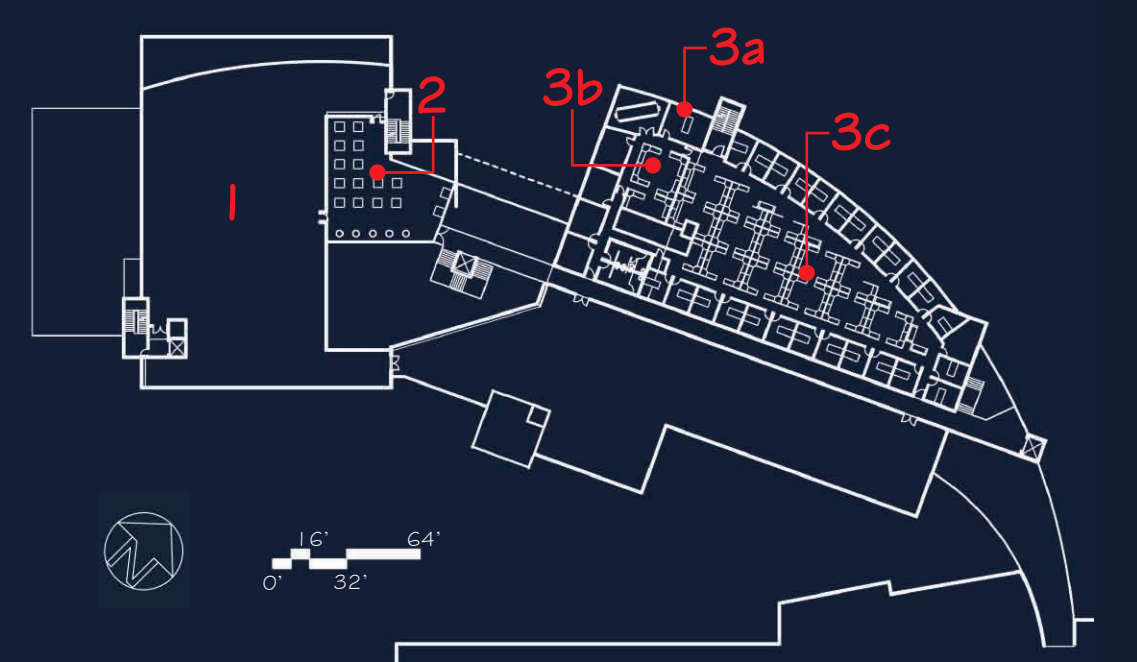
FOURTH FLOOR PLAN

1. DEAN'S OFFICE
2. ASSOCIATE DEAN OF ADMINISTRATION AND PLANNING
3. ASSOCIATE DEAN OF RESEARCH



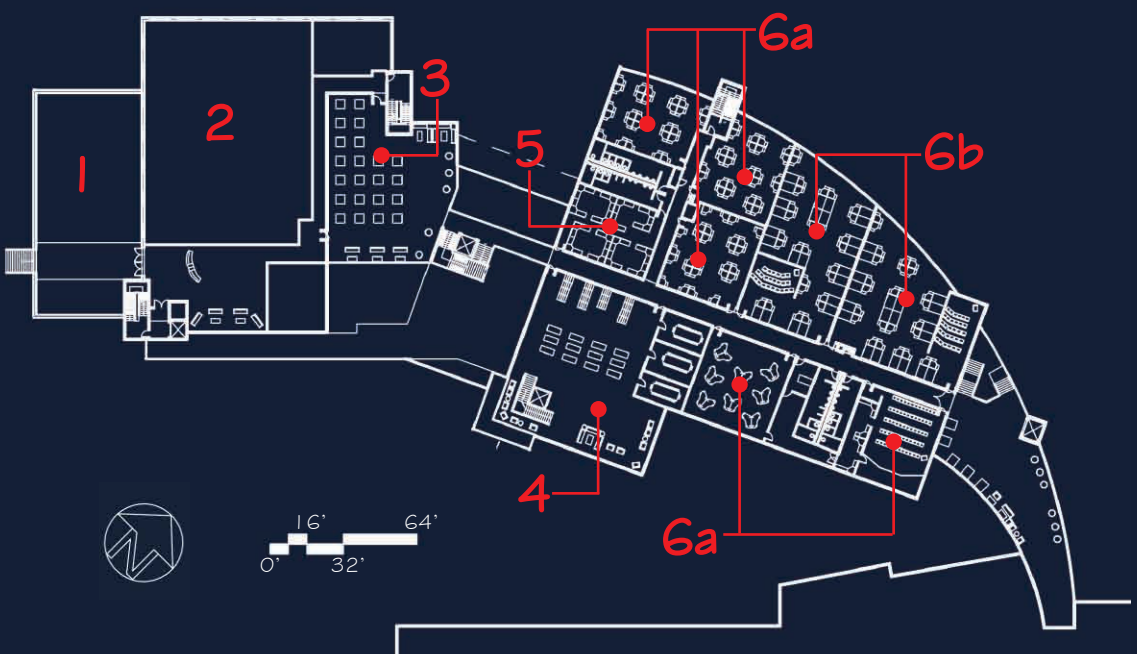
THIRD FLOOR PLAN

1. ASSOCIATE DEAN OF UNDERGRADUATE EDUCATION
2. LOUNGE
3. AE DEPARTMENT
 - A. AE DEPARTMENT HEAD
 - B. AE ASSISTANTS
 - C. AE FACULTY & GRAD OFFICES



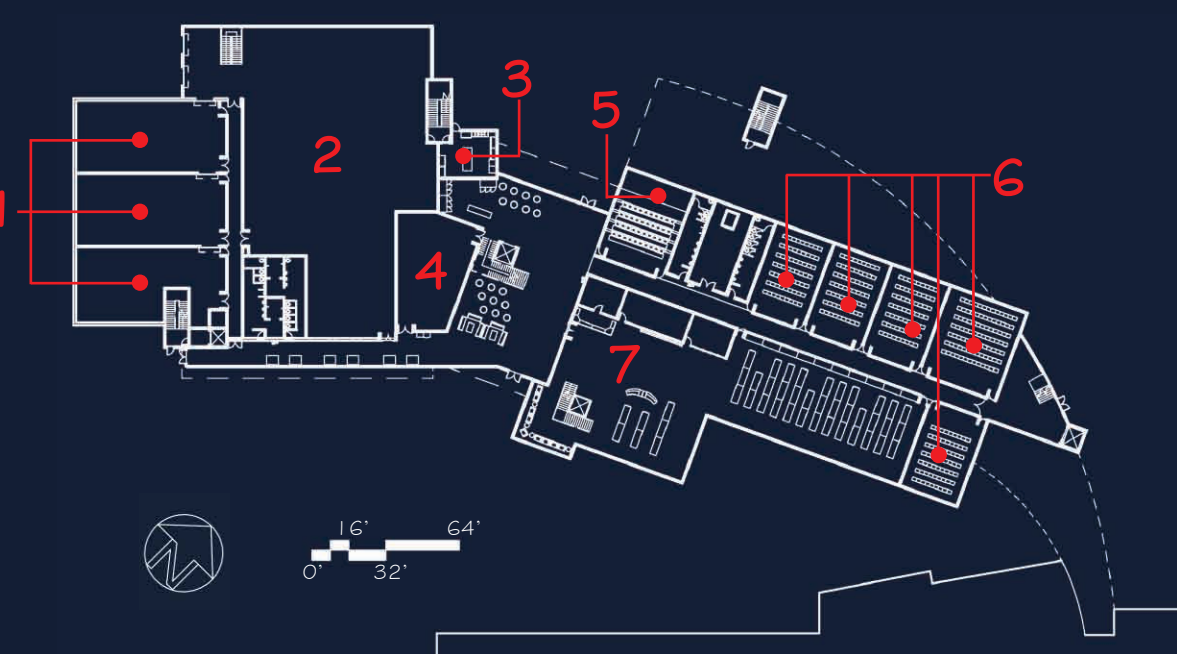
SECOND FLOOR PLAN

1. DEAN'S TERRACE
2. DEAN'S OFFICE GENERAL SHARED SPACE
3. LOUNGE
4. LIBRARY
5. STUDENT ORGANIZATIONS
6. AE SPACES
 - A. 5TH YEAR STUDIO
 - B. 2ND & 4TH YEAR STUDIO
 - C. ICON LAB/COMPUTER LAB



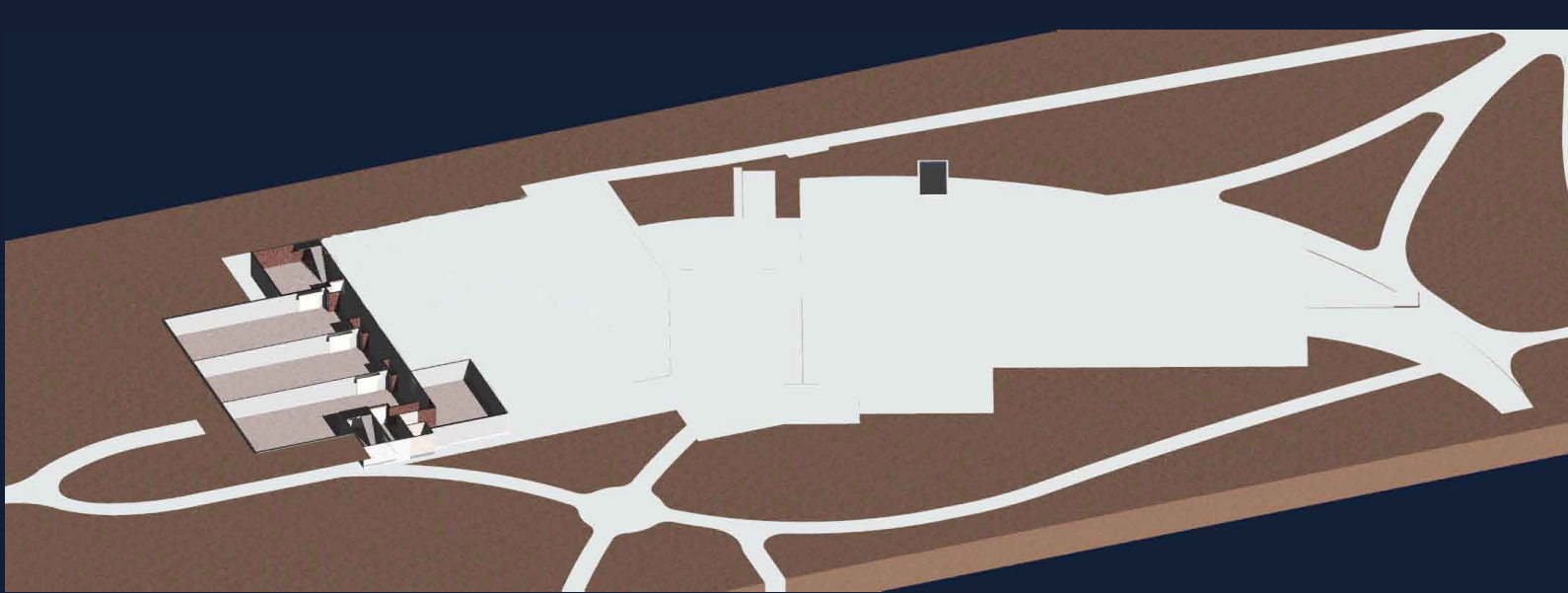
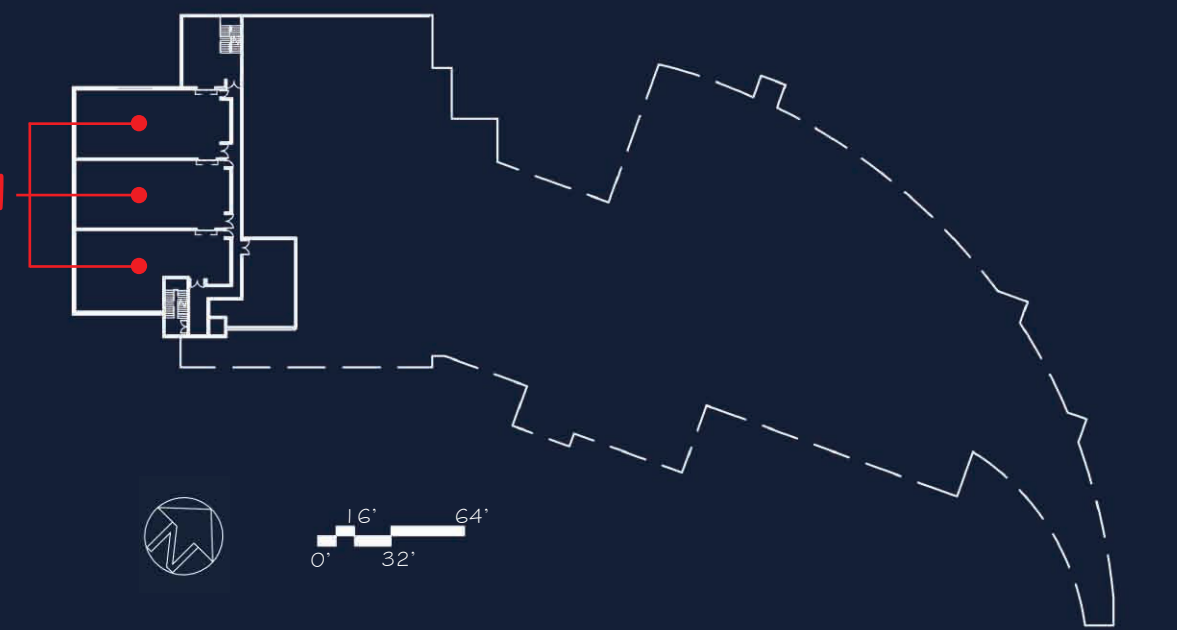
FIRST FLOOR PLAN

1. RESEARCH LABS
2. LEARNING FACTORY
3. KITCHEN/CAFE
4. ENGINEERING COPY CENTER
5. SEMINAR ROOM
6. CLASSROOMS
7. LIBRARY



BASEMENT FLOOR PLAN

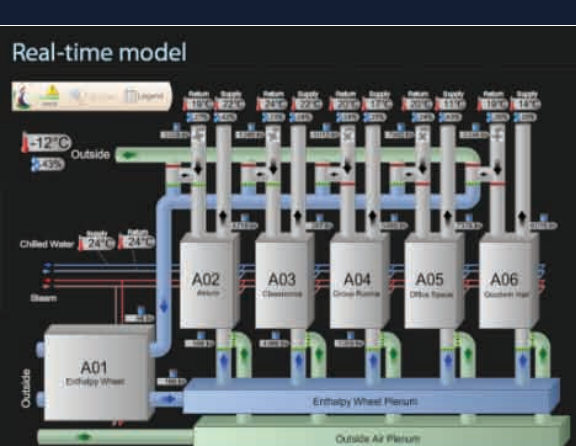
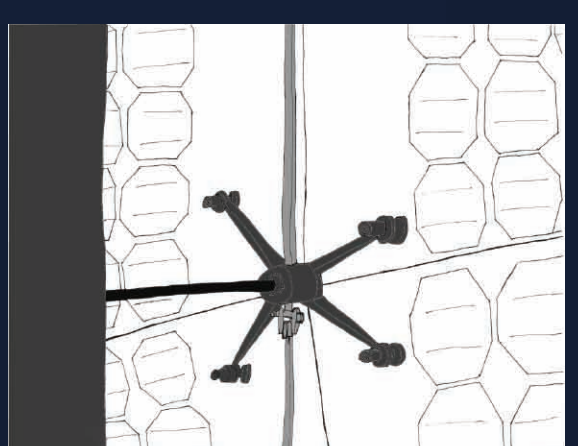
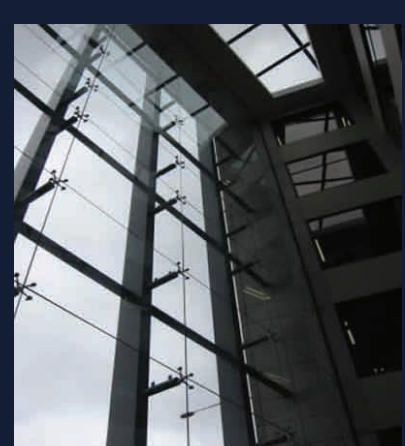
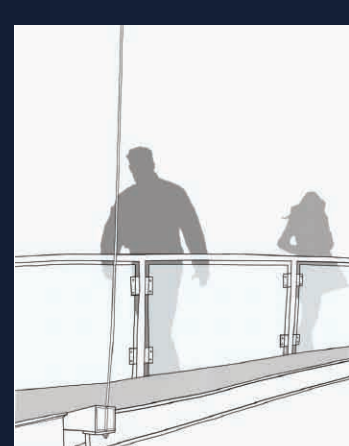
1. RESEARCH LABS



LIVING LABORATORY ELEMENTS

THE SIGNATURE ENGINEERING BUILDING WILL INCLUDE EXPOSED SYSTEMS FOR USE AS TEACHING AIDS.

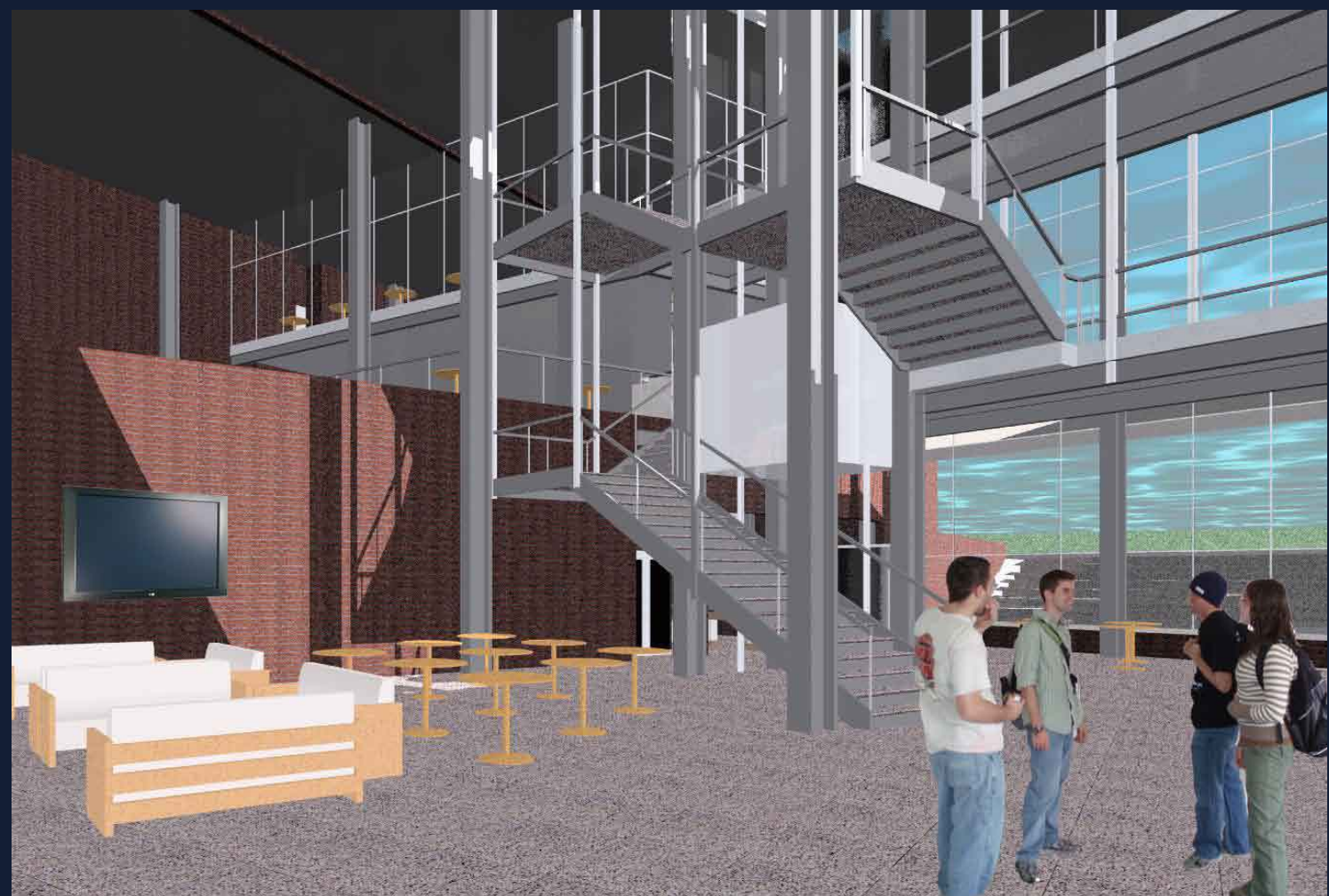
THESE SYSTEMS WILL ALLOW STUDENTS TO EXPERIENCE MORE HANDS-ON LEARNING.



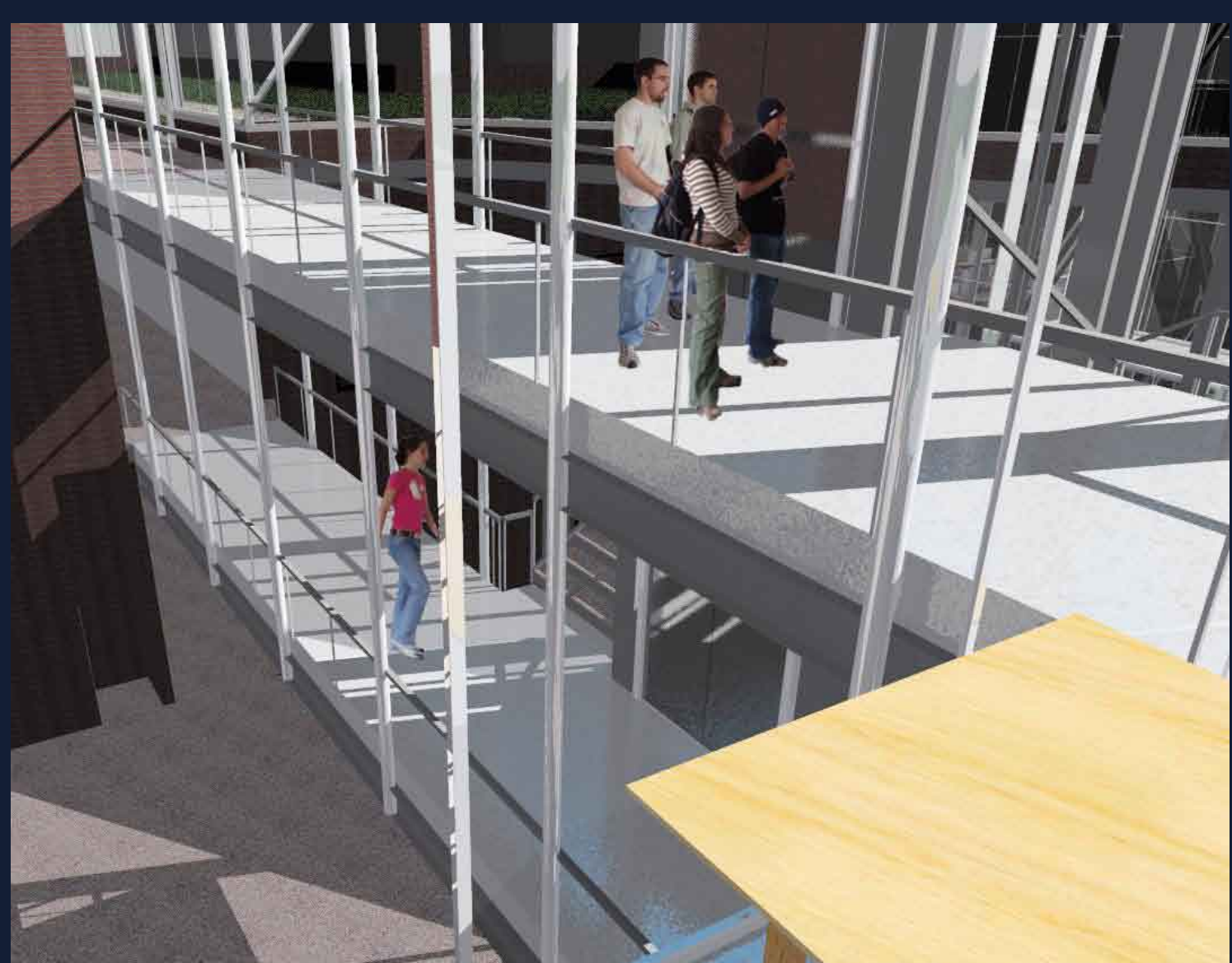
VIEW FROM NORTH ATHERTON



VIEW FROM WHITE COURSE DRIVE



VIEW OF MAIN LOBBY



VIEW OF WALKWAYS FROM LOUNGE



VIEW OF GREEN ROOF FROM HALLWAY